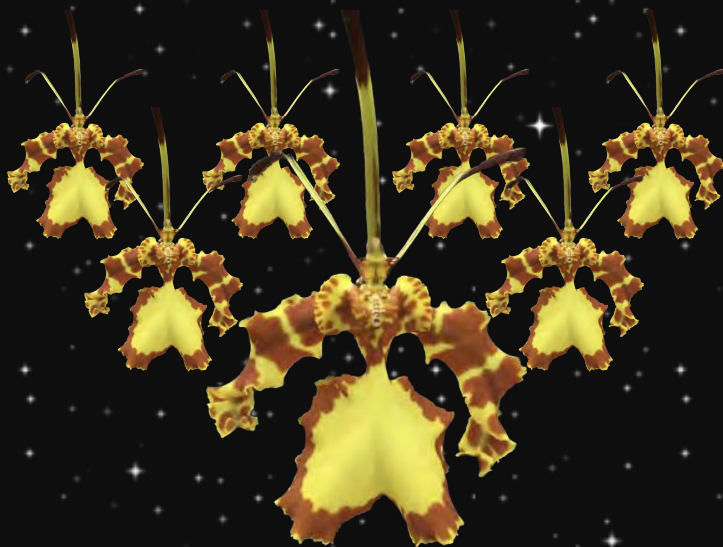


OKLAHOMA ORCHID SOCIETY

2024 SHOW SCHEDULE

CLOSE ENCOUNTERS — WITH ORCHIDS



2024 OKLAHOMA ORCHID SOCIETY SHOW & SALE

Saturday & Sunday, May 4 & 5, 10AM–4PM

Will Rogers Gardens Exhibition Center
3400 NW 36th Street, Oklahoma City, OK

Free Admission & Free Parking

Information: okOrchidSociety.org

Member of Oklahoma Garden Clubs, Inc.

MEMBER OF OKLAHOMA GARDEN CLUBS, INC. &
MEMBER OF SOUTHWEST REGIONAL ORCHID GROWERS ASSOCIATION

SHOW RULES AND REGULATIONS FOR FULL EXHIBIT SHOW

It is recommended that all show participants read and understand the rules and regulations as well as the schedule of entries. Any questions should be addressed to the SHOW CHAIR. In addition to the rules and regulations contained in this show schedule, applicable portions of the most recent edition of the *AOS Handbook on Judging and Exhibition* will be followed.

GENERAL

1. **Authority.** The decision of the Chair of Judges is final with respect to all ribbons, trophies, and awards. The decision of the Show Chair is final with respect to all other matters.
2. **Compliance.** Any person complying with these rules and regulations may participate in the show.
3. **Attendance during judging.** During judging, positively no one is permitted within the exhibit area except persons participating directly in the judging process.
4. **Damage to property.** Neither the show committee, the host society, the company or persons controlling the show site nor the Southwest Regional Orchid Growers Association (SWROGA) will be responsible for damage to plants, flowers, display material and trophies. However, all reasonable care will be taken to avoid damage or loss of property.
5. **Diseases and pests.** For your protection, any plant showing evidence of being diseased or having pests will not be permitted and must be removed from the premises. Removal recommendation must be by three or more certified judges. This also applies to plants for sale by commercial exhibitors.

JUDGING

General. All plants and flowers will be considered for recognition based on present quality, without regard to previous awards. To maintain highly competitive standards, no trophies or other recognition will be awarded if, in the judge's opinion, the flower, plant, or exhibit does not warrant such recognition. Judges may subdivide or add additional classes or awards at their discretion.

1. **American Orchid Society (AOS) Awards.** This show has been approved for AOS judging. All flowers, whether entered for judging or not, will be considered for AOS awards unless otherwise marked by the exhibitor. If an inflorescence has previously been exhibited at an AOS function, it is considered to have been screened and, therefore, is not eligible for further consideration. It should be marked "Not for AOS judging". This will not disqualify the flower from consideration in the proper ribbon or trophy class. Submission of plants or cut flowers for judging shall obligate the exhibitor to accept any award granted and to pay any fees connected with such an award except where he has clearly indicated before the judging that his entry is not to be AOS judged.
2. **Ribbon Judging.** First, Second and Third place ribbons may be awarded to the three best plants in each class other than a trophy class. All plants and cut flowers must be correctly entered in the appropriate class, or reclassified by a judge, to be eligible for ribbon judging. Exhibitors will enter their plants using standard SWROGA tags. The carbon copy goes on the plant and the original copy goes to the Plant Registration Desk. Tags should show parentage, clonal name if assigned, and previous awards to the clone (see rule 9). Each plant should be entered in ONE class only (except a miniature which may be entered both in its regular class and in class 716). An addendum to this schedule entitled "An Alphabetical Listing of Orchid Species and Intergeneric Hybrids" is available at the Plant Registration Desk with

suggestions for classification. Where a plant could conceivably fit more than one class, the exhibitor shall enter it in the first applicable class listed. A mericlone will be considered a vegetative division of the original plant and must be treated as such. If a plant is a mericlone, it should be so designated and the clonal name given. Species classes will include natural hybrids. All plants entered must be in bloom except those in class 714. Criteria employed in ribbon class definitions refer to characteristics prevailing for mature plants grown according to normal horticultural practice.


3. **Reclassify Entries.** Improperly entered plants may be reclassified at the discretion of the judges at any show.
4. **Trophy Eligibility.** Unless otherwise specified within this schedule, all trophies are open to all exhibitors in this show if the exhibit is entered properly and complies with the show rules in this schedule.
5. **Plant and Flower Trophies.** This schedule contains several trophy classes for Best Grown and Best Flower of a group of ribbon classes as well as other special trophies. Plants and flowers must be entered for ribbon judging to be eligible for these trophies and no separate or further entry is required. In judging for best-grown plant in each class so specified, good culture, number of growths, and number of flowers are to be considered, not necessarily the quality of flowers.
6. **Exhibit Trophies.** Each exhibit may be entered in one class only (except a tabletop exhibit may be entered in both 928 and 936). All exhibits must be entered on standard SWROGA tags. The carbon copy goes on the exhibit and the original goes to the Plant Registration Desk. All exhibits will automatically be considered for the AOS Show Trophy and will be judged according to the criteria in the most recent edition of the *AOS Handbook on Judging and Exhibition*. Plants and cut flowers may be combined in

any exhibit without affecting ribbon or award judging, but the exhibit must be designated either "Plant" or "Cut Flower" for trophy consideration. Exhibits other than commercial, group, or society, which are predominantly cut flowers, should be entered in class 934.

7. **Artificial Materials.** All displays should have orchids as the focal point. The use of foliage is encouraged and an occasional non- orchid flower(s) that is not a focal point should not disqualify the display. No artificial plant material may be used other than artificial grass. No dyed or artificially colored or sprayed orchids are permitted.
8. **Classification.** For trophy classes 920-948, the following definitions will apply:
 - a. **Tabletop Exhibit**—is defined as an exhibit in which all flowers, plants, foliage, and accessories are arranged and exhibited within the confines of a tabletop.
 - b. **Floor Exhibit**—is defined as an exhibit in which plants, flowers, foliage, and accessories are floor based (structures, risers, and/or tables may be incorporated into the exhibit to provide height for the overall design).
 - c. **Novice**—One who has never before entered an individual exhibit in an orchid show.
 - d. **Amateur**—One who has less than 500 sq. ft. of growing area or greenhouse.
 - e. **Private**—One who has 500 sq. ft. or more of growing area or greenhouse.
 - f. **Commercial**—One who grows plants and/or flowers for sale, with or without employed help, and is generally recognized as a significant source of flowers and plants. Any exhibit which is predominately furnished by a commercial grower shall be classified as a commercial exhibit. Any person selling at a show is considered as commercial at that show.

- g. **Group/Society**—If an exhibit contains entries from two or more individuals who are not members of the same household, it must be entered as a group or society exhibit. Each person involved is an exhibitor. If the predominate part of the exhibit is furnished by a commercial grower, the exhibit shall be classified as commercial.
- h. **Youth Exhibit**—Exhibitor must be under the age of 18. The exhibit may consist of plants, cut flowers, and/or collectibles, which must come from the Exhibitor's household.
9. **Entry Tags.** Instructions for completing entry tags:
- Obtain an exhibit number and entry tags at the Plant Registration Desk.
 - Complete the entry tag as shown below. Class numbers should correspond to the Show Schedule. Entry tags must be printed legibly and show plant name, a clonal name if designated, and any previous awards. Hybrids must show parentage.
 - The original copy of the entry tag goes to the Plant Registration Desk and the carbon copy is attached to the plant or exhibit.

The following is an example of a completed tag:

	329	12	C	<input type="checkbox"/> Not for AOS Judging
	CLASS	EXHIBIT	LETTER	
Phal. Goodgirl		'Katherine'		FCC/AOS
NAME		VARIETY		AWARD(S)
PARENT 1: Phal. Hotshot '#1'				
PARENT 2: Phal. Pretty Girl '#2'				

Note: For all group and society exhibits, an alphabetical letter is assigned to each exhibitor for identification. A listing of these is given to the Plant Registration Desk. This letter is entered as above. Never show the name of any exhibitor on the tag.

SCHEDULE OF SHOW ENTRIES

Note to Exhibitors: Always enter the plant in the lowest possible class number. Intergeneric hybrids should be classified with the genus they most closely resemble.

CATTLEYA ALLIANCE

102. *Epidendrum*, *Encyclia*, and *Prosthechea* species.
104. *Epidendrum*, *Encyclia*, and *Prosthechea* hybrids and intergeneric hybrids.

TROPHIES

106. Best-grown plant from classes 102–104.

108. Best flower from classes 102–104.

110. *Brassavola* species (excluding *Rl. digbyana* and *Rl. glauca*), hybrids and intergeneric hybrids RESEMBLING *Brassavola*.
112. *Broughtonia* species, hybrids and intergeneric hybrids RESEMBLING *Broughtonia*.
113. *Laelia* species (*anceps*, *gouldiana*, *rubescens*, *speciosa*, and including *Myrmecophila* (syn. *Schomburgkia*) transferred into *Laelia*: *colombiana*, *moyobambae*, *rosea*, *schultzei*, *splendida*, *superbiens*, *undulata*) and hybrids.
114. *Guarianthe* species (*skinneri*, *bowringiana*, *aurantiaca*, *patinii*, *guatemalensis*), hybrids and intergeneric hybrids RESEMBLING *Guarianthe*.
116. *Rhyncholaelia* species (*digbyana*, *glauca*), hybrids and intergeneric hybrids RESEMBLING *Rhyncholaelia*.

TROPHIES

117. Best-grown plant from classes 110–116.

118. Best flower from classes 110–116.

Note: Cattleya Alliance continues on next page.

CATTLEYA ALLIANCE CONTINUED

- 120–122. *Cattleya* species, (includes *Sophronitis* species, and *Laelia* species transferred into *Cattleya*).
120. All colors—Large flower (over 10 cm).
122. All colors—Small flower (10 cm or less).
- 124–137. *Cattleya* hybrids and intergeneric hybrids. (Large = over 10 cm; Small = 10 cm or less).
124. Lavender/purple/mauve/pink/blue—large.
125. Lavender/purple/mauve/pink/blue—small.
126. White—large.
127. White—small.
128. Semi-alba—large.
129. Semi-alba—small.
130. Yellow/green—large.
131. Yellow/green—small.
132. Red/reddish—large.
133. Red/reddish—small.
134. Orange/bronze—large.
135. Orange/bronze—small.
136. Other colors (splashes, spots, patterns, etc.)—large.
137. Other colors (splashes, spots, patterns, etc.)—small.
138. Allied *Cattleya* genera species, hybrids and intergeneric hybrids other than above.

TROPHIES

- 140. Best-grown plant from classes 120–138.**
- 142. Best flower from classes 120–138.**

CYPRIPEDIUM ALLIANCE

- 200. *Cypripedium, Selenipedium, Mexipedium* species.
- 201. *Cypripedium* hybrids.
- 202. *Phragmipedium* species.
- 203. *Phragmipedium besseae*-influenced hybrids.
- 204. *Phragmipedium kovachii*-influenced hybrids.
- 205. *Phragmipedium* hybrids other than above.
- 220–225. *Paphiopedilum* species by Section(s):
 - 220. Parvisepalum. Pouch thin (with pleats). Petals wide. Leaves either mottled or plain (*malipoense, delenatii*).
 - 221. Brachypetalum. Inflorescence very short. Pouch thick and egg-shaped. Petals wide. Flowers single. Leaves mottled (*concolor, bellatulum*).
 - 222. Sigmatopetalum / Barbatum. Sepals striped. Flowers single. Leaves mottled. Small synsepal (*sukhakulii, callosum, lawrenceanum*).
 - 223. Cochlopetalum. Petals short, horizontal, corkscrew-shaped. Flowers sequential. (*primulinum, glaucophyllum*)
 - 224. Paphiopedilum / Insigne. Petals narrow and leaves plain. Sepals not distinctly striped. Flowers single. Large synsepal. Inflorescence of intermediate length (*insigne, fairrieatum*).
 - 225. Coryopedilum / Pardopetalum. Flowers multi-floral. Petals usually long and down swept. Sepals usually striped. (*rothschildianum, adductum, lowii, parishii*)

Note: *Cypripedium* Alliance continues on next page.

CYPRIPEDIUM ALLIANCE CONTINUED

- 230–240. *Paphiopedilum* hybrids by Section(s):
230. Parvisepalum. Pouch thin (with pleats). Petals wide. Leaves either mottled or plain (malipoense, delenatii, as parents).
231. Brachypetalum. Inflorescence very short. Pouch thick and egg-shaped. Petals wide. Flowers single. Leaves mottled (*concolor*, *bellatulum*, as parents).
232. Sigmatopetalum / Barbatum. Sepals striped. Flowers single. Leaves mottled. Small synsepal (*sukhakulii*, *callosum*, *lawrenceanum*, as parents and includes Maudiae complex).
233. Cochlopetalum. Petals short, horizontal, corkscrew-shaped. Flowers sequential. (*primulinum*, *glaucophyllum* as parents, Pinocchio)
234. Paphiopedilum / Insigne. Petals narrow and leaves plain. Sepals not distinctly striped. Flowers single. Large synsepal. Inflorescence of intermediate length (*insigne*, *fairrieianum*, as parents).
235. Coryopedilum / Pardopetalum. Flowers multi-floral. Petals usually long and down swept. Sepals usually striped (*rothschildianum*, *adductum*, *lowii*, *parishii*)
236. *Paphiopedilum* hybrids, Bulldog. Petals wide and leaves plain. Sepals not distinctly striped. Flowers single. Large synsepal. Inflorescence intermediate length.
240. *Paphiopedilum* hybrids, other. Hybrids that do not fit any of the above classifications.

TROPHIES

- 250. Best grown plant from classes 200–240.**
- 260. Best flower from classes 200–240.**

VANDA AND PHALAEOPSIS ALLIANCE

VANDACEOUS / AERANGIS / ANGRAECIDS SECTION

302. Aerangid and Angraecoid species and hybrids (subtribes Aerangidinae, such as *Aerangis*, and Angraecinae, such as *Angraecum*).
304. *Aerides*, *Arachnis*, *Renanthera*, and *Rhynchostylis* species, hybrids, and intergeneric hybrids.
306. *Papilionanthe* species.
308. *Papilionanthe* hybrids and intergeneric hybrids.
309. *Vanda* [syn] *Neofinetia* species and hybrids resembling *Neofinetia*.

Note: In Classes 310–318, Large flowers are greater than 7 cm (2 $\frac{3}{4}$ "); small flowers are less than or equal to 7 cm (2 $\frac{3}{4}$ ").

- 310–312. *Vanda* species (including syn. *Ascocentrum*).
310. Large flower, all colors.
312. Small flower, all colors.
- 314–317. *Vanda* hybrids (including syn. *Ascocenda*) and intergeneric hybrids other than above.
314. Large flower, red, orange, pink, yellow, bronze, brown.
315. Small flower, red, orange, pink, yellow, bronze, brown.
316. Large flower, blue, lavender, purple, other colors.
317. Small flower, blue, lavender, purple, other colors.
318. Allied Genera species, hybrids and intergeneric hybrids other than above, but excluding *Phalaenopsis*.

TROPHIES

- 320. Best-grown plant from classes 302–318.**
- 322. Best flower from classes 302–318.**

Note: Vanda and Phalaenopsis Alliance continues on next page with Phalaenopsoid Section.

VANDA AND PHALAEOPSIS ALLIANCE

PHALAEOPSOID SECTION

325. *Phalaenopsis* species and natural hybrids.
- 326–337. *Phalaenopsis* hybrids and intergeneric hybrids (including multifloral types) with flowers less than, or equal to 7 cm (2 ³/₄").
326. Solid white.
327. Solid white with colored lip (red/reddish).
328. White with blushes.
329. White with stripes.
330. White with other markings (spots, bars, etc.).
331. Solid pink, lavender, and purple.
332. Pink, lavender, and purple with stripes.
333. Pink, lavender, purple with other markings (spots, bars, etc.).
334. Solid yellow, orange, russet.
335. Yellow, orange, russet with other markings (spots, bars, etc.).
336. Solid red.
337. All other colors (including stripes, spots, bars, etc.).

Note: Phalaenopsoid Section continues on next page.

PHALAEENOPSIS SECTION CONTINUED

- 338–350. *Phalaenopsis* hybrids and intergeneric hybrids other than above (including multifloral types) with flowers greater than 7 cm (2 $\frac{3}{4}$ ").
338. Solid white.
339. Solid white with colored lip (red/reddish).
340. White with blushes.
341. White with stripes.
342. White with other markings (spots, bars, etc.).
343. Solid pink, lavender, and purple.
344. Pink, lavender, purple with stripes.
345. Pink, lavender, purple with other markings (spots, bars, etc.).
346. Solid yellow, orange, russet.
347. Yellow, orange, russet with stripes.
348. Yellow, orange, russet with other markings (spots, bars, etc.).
349. Solid red.
350. Other colors, novelties.

TROPHIES

- 356. Best-grown plant from classes 325–350.**
- 357. Best flower from classes 325–350.**

ONCIDIUM ALLIANCE

402. *Brassia* (includes *Ada*) **species, hybrids, and intergeneric hybrids** RESEMBLING *Brassia* (commonly called Spider Orchids). Flowers have similar sepals and petals, star-shaped; lip large, elongated, pointed.
404. “*Odontoglossum*” **species, hybrids, and intergeneric hybrids** RESEMBLING classical *Odontoglossum*. Petals wide and usually fringed or wavy, lip not dominate, similar color pattern.
406. *Miltoniopsis* **species, hybrids, and intergeneric hybrids** RESEMBLING the classical Pansy Orchid. Flowers large and round. Lip may have a waterfall pattern.
408. *Miltonia* **species, hybrids, and intergeneric hybrids** that generally have sepals and petals star-shaped, lip large and round.
410. *Tolumnia* **species, hybrids, and intergeneric hybrids** RESEMBLING *Tolumnia*. Small plant, no pseudobulb, leaves arranged in a fan.
- 412–414. Thick-leaf Oncidium Alliance
412. *Psychopsis* **species, hybrids, and intergeneric hybrids** RESEMBLING the classical Butterfly Orchid. Flowers single, sequential.
414. Thick-leaf Oncidium Alliance genera species, hybrids, and intergeneric hybrids not specifically mentioned above such as *Trichocentrum*, *Oncidium*, *Grandiphyllum*, etc. Leaves thick (leathery), can be terete or mule ear.
416. Thin-leaf *Oncidium* **species, hybrids, and intergeneric hybrids**, flowers with a natural horizontal spread of less than or equal to 3.0 cm (~1.2 in), all colors.

Note: Oncidium Alliance continues on next page.

ONCIDIUM ALLIANCE CONTINUED

- 418–426. Thin-leaf *Oncidium* **species, hybrids, and intergeneric hybrids**, flowers with a natural horizontal spread greater than 3.0 cm (~1.2 in).
418. Flowers white (with or without markings).
420. Flowers yellow or brown (with or without markings).
422. Flowers purple or lavender (with or without markings).
424. Flowers red or orange (with or without markings).
426. Flowers other colors or mixed that do not fit in above classes.
430. Allied genera **species, hybrids, and intergeneric hybrids** not specifically mentioned above such as *Gomesa*, *Rodriguezia*, *Rhynchostele*, *Aspasia*, *Comparettia*, *Rossioglossum*, *Zelenkoa*, etc.

TROPHIES

432. **Best-grown plant from classes 402–430.**
434. **Best flower from classes 402–430.**

DENDROBIUM ALLIANCE

- 602–605. Flowers resembling *Phalaenopsis* (Phalaenanthe Section species, hybrids and intersectional hybrids).
602. Small flower, (natural spread of flowers 6cm (2 3/8") or less), all colors
603. Purple or lavender.
604. White.
605. All other colors.
- 606–608. Antelope-type flowers (Spatulata Section species, hybrids and intersectional hybrids).
606. White, green, brown.
607. Red, pink, purple, or blue.
608. Splash, striped, and colors other than above.
610. Callista and Formosae (*Nigrohirsuta*) Sections species, hybrids, and intersectional hybrids (*farmerii*, *densiflorum*, *chrysotoxum*, *bellatulum*, *dearii*, etc.).
612. *Dendrobium* (*nobile*) species and hybrids.
613. Latouria Section species, hybrids and intersectional hybrids, (*spectabile*, *alexandrae*, *convolutum*, *engae*, etc.)
614. All sections and allied genera species and hybrids not listed above other than intersectional hybrids.
616. Intersectional hybrids other than above.

TROPHIES

- 618. Best-grown plant from classes 602–616.**
- 620. Best flower from classes 602–616.**

MISCELLANEOUS GENERA

702. *Cymbidium* and allied genera species and hybrids.
704. *Catasetum*, *Clowesia*, *Cynoches*, *Mormodes*, and allied genera species, hybrids, and intergeneric hybrids.
706. *Lycaste*, *Anguloa*, *Bifrenaria*, *Maxillaria*, *Zygopetalum*, *Scuticaria*, *Stanhopea*, *Trigonidium*, and allied genera species, hybrids and intergeneric hybrids other than above.
708. *Phaius*, *Calanthe*, *Spathoglottis*, and other terrestrial species, hybrids and intergeneric hybrids other than above.
710. *Masdevallia* and *Dracula* species and hybrids, other than above.
711. *Pleurothallis*, *Stelis* and allied genera species, hybrids and intergeneric hybrids other than above.
712. *Bulbophyllum*, species, hybrids and intergeneric hybrids.
714. All genera primarily grown for beauty of foliage (need not be in bloom).
715. All other genera not listed elsewhere—species, hybrids and intergeneric hybrids.
716. All miniatures not exceeding 15cm (6") in height when mature, excluding inflorescence. These plants may also be entered in their regular class.

TROPHIES

718. **Best-grown plant from classes 702–716.**
720. **Best flower from classes 702–716—large-flowered forms with a natural spread greater than 2.5 cm (1").**
722. **Best flower from classes 702–716—small-flowered forms with a natural spread equal or less than 2.5 cm (1").**

ORCHIDS IN USE

Advance reservations are encouraged but not required. Orchids must be dominant in all classes. No artificial flowers or foliage may be used. Accessories permitted.

Trophies may be awarded in each class. The CERTIFICATE OF MERITORIOUS ARRANGEMENT and the ARTISTIC CERTIFICATE may be awarded when warranted. The CERTIFICATE OF MERITORIOUS ARRANGEMENT is awarded to an outstanding exhibit in the flower arrangement classes. The ARTISTIC CERTIFICATE (for Artistic Display of Orchids in Use) is awarded to any superior artistic display scoring 90 points or more. The scale of points is used for both awards (7.2.3 and 7.2.4) as listed in Orchid Arrangements (6.3.5) in the most recent edition of the AOS *Handbook on Judging and Exhibition*.

The CERTIFICATE OF MERITORIOUS ARRANGEMENT may be awarded by nationally accredited flower arrangement judges or by a team of AOS certified judges assigned for the purpose. The ARTISTIC CERTIFICATE may be awarded only by a team of AOS judges.

ARRANGEMENTS

- 902. Interpretive—showing originality.
- 904. Mini—total height not to exceed 15 cm (6").
- 906. Novice—someone who has never entered an arrangement in a show.

CORSAGES

- 910. Informal—for daytime wear.
- 912. Formal—for formal or nighttime wear.
- 914. Innovative—wristlet, hair adornment, purse, etc.
- 916. Novice—someone who has never entered a corsage in a show.

TROPHIES

- 908. Best arrangement from classes 902–906.**
- 918. Best corsage from classes 910–916.**

EXHIBIT TROPHIES

Note: Any exhibit which is predominately furnished by a commercial grower shall be classified as commercial.

NON-COMMERCIAL

- 919. Best youth exhibit.
- 920. Best novice exhibit.
- 922. Best amateur exhibit.
- 924. Best private exhibit.
- 926. Best group exhibit.
- 928. Best society tabletop exhibit.
- 930. Best society floor exhibit <50 sq. ft.
- 932. Best society floor exhibit 50 sq. ft. and over.
- 933. Best exhibit using five or fewer plants or cut inflorescences—can be either tabletop or floor.
- 934. Best cut flower exhibit.
- 936. Best tabletop exhibit.

COMMERCIAL

- 938. Best commercial floor exhibit.
- 940. Best commercial tabletop or cut flower exhibit.

BOTH NON-COMMERCIAL AND COMMERCIAL

- 942. Best educational exhibit.
- 944. Best orchid collectible exhibit (stamps, china, pictures, paintings, prints, photos, jewelry, etc.).

These exhibits will be judged equally on artistic impact, scarcity of collection, and applicability toward show theme.

- 946. Best orchid art exhibit containing only items created by the exhibitor (paintings, photos, drawings, ceramics, needlepoint, jewelry, etc.).
- 948. Best orchid conservation exhibit.

SPECIAL TROPHIES—NO ENTRY REQUIRED

Note: If, in the opinion of the judges, no exhibit merits the following trophies, the trophies will be withheld. It is not the intent that the awarding be obligatory.

950. AOS Trophy

All certified AOS judges present, who are not involved in competition for the award, may vote by means of a secret, written ballot. To qualify for the trophy, two-thirds of the voting judges must vote in favor of some exhibit. If more than one third of the voting judges vote “No Award”, the trophy shall not be awarded. The exhibit that receives the highest number of votes shall win the trophy. If a tie in votes exists between two or more exhibits, the exhibit with the highest score shall win. If a tie still exists, the chair of AOS judging, if eligible, shall cast the tie-breaking vote. If the chair is not eligible to vote, a designated reserve judge shall break the tie. Further information is contained in 6.3.2 of the *AOS Handbook on Judging and Exhibition*.

To be eligible to receive this award a total of 80 points must be received.

General arrangement	35
Quality of flowers	35
Variety	20
Labeling	10

954. Orchid Digest Show Trophy

This award is given to encourage the growing of better quality hybrids and species and to encourage their better culture.

The Orchid Digest Show Trophy may be awarded by a team consisting of a minimum of five judges, accredited where possible, to one non-commercial exhibit displaying the highest levels of:

- A. Artistry, taste, and innovation in design and presentation
- B. Flower quality
- C. Cultural excellence

Judges may also consider the exhibit's educational value and the rarity of the plant materials. The definition of "high flower quality" is to be taken from the most recent edition of AOS judging forms for hybrids and species.

960. SWROGA Show Trophy for Best Flower

This trophy will be awarded to the plant or cut flower judged the "Best Flower in Show". The plant or cut flower will be selected from the Best Flower classes in the SWROGA Schedule. The trophy will be awarded by a team of five accredited AOS judges, who do not have a personal conflict. If five such judges are not available, the trophy may be given by the qualifying judges present.

965. SWROGA Show Trophy for Best Grown Plant

This trophy will be awarded to the plant judged the "Best Grown Plant in Show". The plant will be selected from the Best Grown Plant classes in the SWROGA Schedule. The trophy will be awarded by a team of five accredited AOS judges, who do not have a personal conflict. If five such judges are not available, the trophy may be given by the qualifying judges present.

ACKNOWLEDGMENTS

OKLAHOMA ORCHID SOCIETY TRUSTEES

President	Mike Friday
Vice-President	John Spencer
Treasurer	Jessica Nelson
Secretary	Kim Kyker
Immediate Past President	Doug Needham
Elected Trustee	Jana Butcher
Elected Trustee	Gerry Holland

AFFILIATION REPRESENTATIVES

American Orchid Society	Gerry Holland
Great Plains Judging Center	Catherine Chance
OKC Council of Garden Clubs	Jana Butcher
Orchid Digest.....	Bill Parker
SWROGA Directors	Mike Friday and Bill Parker

SHOW & SALE COMMITTEES

Show & Sale Co-Chairs.....	Jana Butcher, Bridget Andoe, and Marinel Kelley
AOS Judging Coordinator	Jana Butcher
Bench Setup.....	Catherine Chance
Certificates & Coupons.....	Jana Butcher
Exhibits and Staging.....	Jana Butcher
Head Ribbon Judging Clerk	Mike Friday
Hospitality	Marinel Kelley
Kids Korner Setup:	Jana Butcher
OOS Exhibit.....	Gerry Holland and Johnita Turner
Publicity	Doug Needham, Bridget Andoe, and Gerry Holland
Raffle	Robert Hoover

ACKNOWLEDGMENTS CONTINUED

Registration	Doug Needham
Ribbons & Trophies	Marinel Kelley
Show Schedule	Doug Needham
Signage	Howard Brown
Silent Auction.....	Carol Ash and Bunny Hutson
Trophy Placement	John Spencer and Mike Friday
Vendors	Jana Butcher
Welcome Table & Membership.....	Bridget Andoe

Thank you to the many members who volunteered and assisted with planning and hosting this year's Show & Sale!

SHOW & SALE POSTCARD DESIGN

Congratulations to Doug Needham, winner of the 2024 show postcard competition.

SHOW & SALE VENDORS

OKIE-ORCHIDS

Brian Truong
6100 Whispering Grove Dr
Oklahoma City, OK 73169
405-887-4644
okorchids@gmail.com

SANDSTONE ORCHIDS & NURSERY, LLC

Danny Lyon
P.O. Box 31
Bristow, OK 74010-0031
918-367-5908
sandstoneorchids@wildblue.net

SUNROOMS & MORE

Mike Hainrihar
13900 N Sante Fe
Edmond, OK 73013
405-842-3622
office@oksunrooms.com
oksunrooms.com

TIMBUCKTOO ORCHIDS

Sarah Pratt
P.O. Box 65
Sedgwick, KS 67135-9179
316-722-0321
svcsjp@pixius.net

IN MEMORIAM

The poem below, Lady's Slipper, was written by our good friend and orchid enthusiast L.K. Magrath, Ph.D. It is republished here in his memory and in memory of all of the cherished orchid lovers worldwide who remain with us in spirit only.

LADY'S SLIPPER

In a cathedral made by no man's hand
I walked in awe
Upon the softest of carpets
Created upon no loom
In softly filtered pale green light
Shot through with rays of gold
And purest white

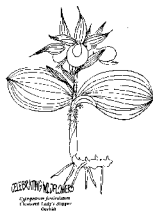
While round me sounded the Sweetest
Most innocent hymns of all
Sung by Gods small-feathered creatures.

Then I saw it standing tall
Swaying slightly in the gentle breeze
Stem and leaves of purest green
With a golden slipper at its tip.

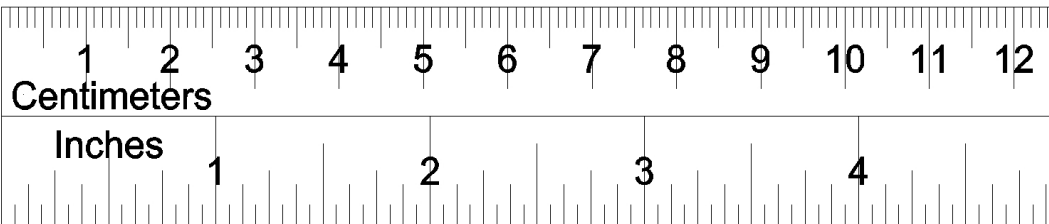
God's hands have touched all
But with this perfect creation
His hands must have lingered long.

How else account for such beauty
As the lady's-slipper's
One and all!

Larry Magrath



NOTES



OKLAHOMA ORCHID SOCIETY'S MISSION

Oklahoma Orchid Society, Inc., was founded on February 10, 1950, in Oklahoma City, OK, to educate and foster the appreciation of orchids and their culture. In fulfillment of its mission, the Society shall: bring together persons interested in learning about orchids; promote interest in orchid culture; encourage all orchid activities of interest to the enthusiast, including the holding of orchid shows and sales; procure and disseminate among its members information as to the methods of orchid culture, conservation, hybridization, and propagation; and exchange orchid pollen, seeds, plants, materials, and information as to sources of supplies used in orchid culture.

Oklahoma Orchid Society is registered as a not-for-profit corporation in the state of Oklahoma (EIN: 16-1744105), is exempt from federal income tax under Internal Revenue Code (IRC) Section 501(c)(3), and is further classified as a public charity under IRC Section 509(a)(2). Donors can deduct contributions they make to the Society under IRC Section 170. The Society is also qualified to receive tax deductible bequests, devises, transfers, or gifts under Section 2055, 2106, or 2522. Copies of IRS forms 1023-EZ, 990-N, and Letter 947 are available for public inspection upon request.



American Orchid Society
Education. Conservation. Research.
Affiliated Society